

FURUNO

OPERATOR'S MANUAL

NAVIGATIONAL ECHO SOUNDER

MODEL FE-700



FURUNO ELECTRIC CO., LTD.
NISHINOMIYA, JAPAN

© FURUNO ELECTRIC CO., LTD.

9-52 Ashihara-cho,
Nishinomiya, Japan

Telephone : 0798-65-2111

Telefax : 0798-65-4200

Your Local Agent/Dealer

All rights reserved.

Printed in Japan

FIRST EDITION : JAN. 2000

N1 : FEB. 10,2003

PUB.No. OME-23660

(TATA) FE-700



* 00080890802 *



* OME23660N1 *



SAFETY INSTRUCTIONS



WARNING



ELECTRICAL SHOCK HAZARD
Do not open the equipment.

Only qualified personnel should work inside the equipment.

Immediately turn off the power at the switchboard if water leaks into the equipment.

Continued use of the equipment can cause fire or electrical shock. Contact a FURUNO agent for service.

Do not disassemble or modify the equipment.

Fire, electrical shock or serious injury can result.

Immediately turn off the power at the switchboard if the equipment is emitting smoke or fire.

Continued use of the equipment can cause fire or electrical shock. Contact a FURUNO agent for service.

Make sure no rain or water splash leaks into the equipment.

Fire or electrical shock can result if water leaks in the equipment.

Use the proper fuse.

Use of a wrong fuse can result in equipment damage and void the warranty.



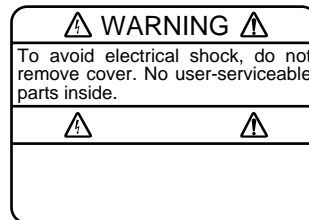
CAUTION

Do not power the equipment when the transducer is in air.

The transducer may become damaged.

WARNING LABEL

A warning label is attached to the equipment. Do not remove the label. If the label is missing or illegible, contact a FURUNO agent or dealer.



Name: Warning Label (1)
Type: 86-003-1011-0
Code No.: 100-236-230

About the TFT LCD

The TFT LCD is constructed using the latest LCD techniques, and displays 99.99% of its pixels. The remaining 0.01% of the pixels may drop out or blink, however this is not an indication of malfunction.

RECORD OF MODIFICATIONS IN THIS OPERATOR'S MANUAL

Pub No.	Software (Prog No.)	Outline of changes in Operator's manual
Publicized for submission to type test by BSH (Feb/2000)	<u>Display Unit</u> 02522970-01 <u>Digital Depth Indicator</u> 65-5-0100-001	displayed at switch-on (Subject to change by the type approval authorities.) (Subject to change by the type approval authorities.)
OME-23660-F Dec/2000	<u>Digital Depth Indicator</u> 65-5-0100-003	Changed [Unit] key to [*] and the related part of software.
OME-23660-G Apr/2001	Display Unit 02522970-02 (Serial no. 2232-0618 and after)	Added TRANSDUCER SETTING option in the EXTENSION MODE menu. Added KEEL DISTANCE option in the SYSTEM MENU3.
OME-23660-H May/2001	----	Modified errors.
OME-23660-K 42002	Display Unit 02522970-03	Modified to conform with IEC 61162-1 Edition 2.

CONTENTS

FOREWORD.....iv	
A Word to FE-700 Owners..... iv	
Features..... iv	
SYSTEM CONFIGURATION v	
SPECIFICATIONS OF FE-700SP-1	
1 OPERATION 1	
1.1 Control Description.....1	
1.2 Indications, Markers2	
1.3 Turning On/Off.....3	
1.4 Tone and Brilliance3	
1.5 Panel Dimmer3	
1.6 Display Mode4	
1.7 Range Scale.....7	
1.8 Gain Control.....7	
1.9 Automatic Operation.....7	
1.10Picture Colors.....7	
1.11 Shallow Water Alarm8	
1.12Draft.....8	
2 MENU OPERATION9	
2.1 Menu Overview9	
2.2 Suppressing Low Level Noise.....9	
2.3 Suppressing Interference.....9	
2.4 Picture Advance 10	
2.5 Trend.....10	
2.6 Interval.....10	
3 SYSTEM MENU 11	
3.1 System Menu 11	
3.2 System Menu 112	
3.3 System Menu 212	
3.4 System Menu 3..... 13	
4 ECHO QUALITY SETTING14	
4.1 Demonstration Display 14	
4.2 Transducer Setting..... 14	
4.3 Bottom Level..... 15	
4.4 TVG Level..... 15	
4.5 Echo Offset 15	
5 OPERATION OF DIGITAL DEPTH INDICATOR FE-720 (OPTION)16	
5.1 Basic Operation..... 16	
5.2 Menu Operation..... 17	
5.3 Diagnosis 18	
5.4 Factory Setting 18	
6 MAINTENANCE, TROUBLESHOOTING19	
6.1 Checking..... 19	
6.2 Cleaning the Display Unit 19	
6.3 Transducer Maintenance..... 19	
6.4 Replacing the Fuse, Battery 19	
6.5 Troubleshooting 20	
6.6 Diagnostic Test..... 21	
6.7 Test Pattern..... 21	
6.8 Clearing the Memory..... 22	
7 MENU TREE.....23	
8 DIGITAL INTERFACE (IEC 61162-1 EDITION 2)24	
9 PARTS LOCATION, PARTS LIST...32	
Declaration of Conformity	

FOREWORD

A Word to FE-700 Owners

Thank you for purchasing this navigational echo sounder. We are confident you will discover why FURUNO has become synonymous with quality and reliability.

Dedicated in the design and manufacture of marine electronics equipment for half a century, FURUNO Electric Company has gained an unrivaled reputation as a world leader in the industry. This is the result of our technical excellence as well as our worldwide distribution and service network.

Please carefully read and follow the safety information and operating and maintenance instructions set forth in this manual before attempting to operate the equipment and conduct any maintenance. Your navigational echo sounder will perform to the utmost of its ability only if it is operated and maintained in accordance with the correct procedures.

This equipment is designed, produced and documented by FURUNO ELECTRIC CO., LTD., complying with ISO 9001 standards as certified by the Lloyd's Register of Quality Assurance System.

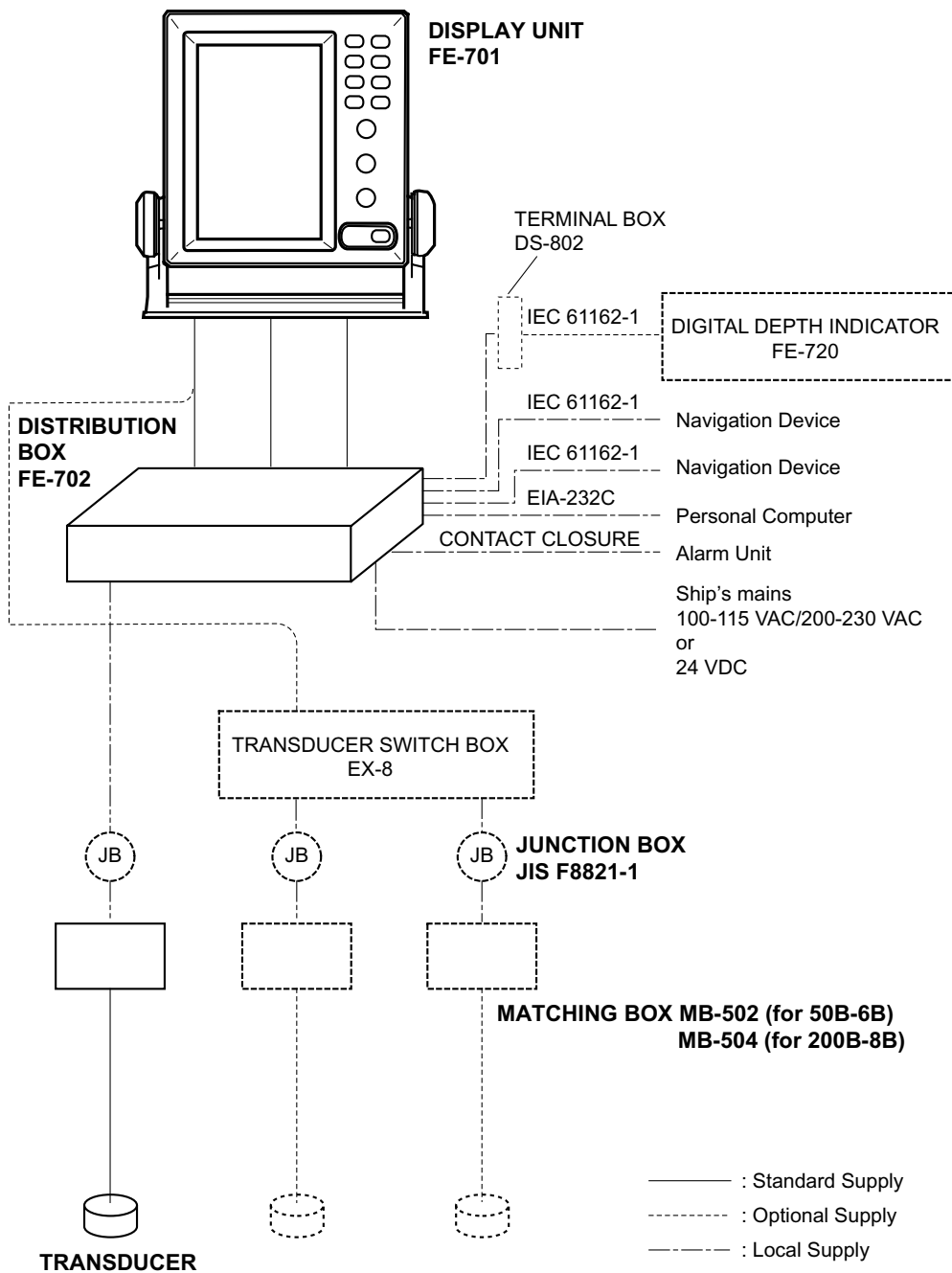
Features

The FURUNO FE-700 is comprised of display unit and transducer unit. Echo sounding data is displayed on the bright 6.5-inch color TFT (Thin Film Transistor) LCD display.

The main features of the FE-700 are

1. Complies with the IMO and ISO standards MSC.74(69) Annex 4 and ISO9875.
2. Cost-effective; no paper, no consumables; high accuracy and high reliability - no rotating gears and belts as in the paper echo sounders
3. High-contrast 6.5-inch color LCD display featuring a wide viewing angle and adjustable brightness.
4. Wide variety of modes with never-get-lost default position.
5. Automatic function permits unattended adjustment of range, gain, and pulselength. The range scale and gain automatically change to display the bottom.
6. Position, course, speed, time are repeated from the external devices.
7. Alarms: shallow water, bottom lost, power drop

SYSTEM CONFIGURATION



FE-700 system configuration

PRINCIPLE OF OPERATION

The FE-700 uses ultrasonic pulses to detect the seabed and other underwater objects. The display unit contains all basic electric circuits and logic processor. Electrical pulses are converted into acoustical energy in the transducer fitted on the ship's hull. The processor measures the time of pulses travelling between the seabed and transducer and displays the water depths in the graphical form or other forms.

The transducers have a specific beam width with respect to their working frequency, 50 kHz or 200 kHz. The high frequency has a narrow beamwidth and is immune to aeration when the ship is going astern or in rough weather. The low frequency has a wide beamwidth and more powerful sounding capability.

SPECIFICATIONS OF NAVIGATIONAL ECHO SOUNDER FE-700

1 DISPLAY UNIT

- 1.1 Graphical Display 6.5-inch color TFT LCD, 320 x 234 pixels
- 1.2 Echo Colors 8 colors or 8 level monochrome
- 1.3 Display Area 133 x 97 mm
- 1.4 Basic Display Range

Unit	Range							
	1	2	3	4	5	6	7	8
Meters	5	10	20	40	100	200	400	800
Feet	15	30	60	120	300	600	1500	2500
Fathoms	3	5	10	20	50	100	200	400

*Default settings; it could be customized for use w/o range 3 and 6.

- 1.5 Accuracy $\pm 2.5\%$ on any range
- 1.6 Minimum Range 0.5 m (200 kHz), 2.0 m (50 kHz)
- 1.7 Draft 0 to 30 m in 0.1 m steps, default 0 m
- 1.8 Pulse Repetition Rate (PRR)

Depth (m)	P/L (ms)	PRR (pulse/min)
5, 10, 20	0.25	750
40	0.38	375
100	1.00	150
200	2.00	75
400,800	3.60	42

- 1.9 Display Mode
 - “NAV”: Basic echo presentation with the depth below transducer
 - “DBS”: Echo presentation with the depth below sea surface
 - “HISTORY”: Historical Echo presentation with the depth
 - “LOGBOOK”: Echo presentation with the pop-up table showing
Time, Depth and L/L* data memorized at preset interval.
 - “OS DATA”: Echo presentation with the pop-up table of present
navigational data; L/L*, course*, speed*, time, depth.
 - “HELP”: Echo presentation with the help menu and note.
 - “MENU”: Echo presentation with the user menu

1.10 Picture Advance Speed

Slow mode 15 minutes or more

Fast mode Picture advance range

Range (m)	5	10	20	40	100	200	400	800
Interval (min.)	1.8			8		20	30	

- 1.10 User Setting Gain, Range, Alarm, Draft, Brilliance, Dimmer, Color, Auto
- 1.11 Auto Set Mode Gain, range and clutter will be automatically adjusted.
- 1.12 Alarm Shallow water (default 20 m), Bottom lost, Power drop
- 1.13 Logbook Display Depth, Internal clock, L/L*
1 hour at 5 sec Interval, 12 hours at 1 minute interval and 24 hours at 2 minutes interval
*: External navigational sensor required.

2 TRANSCEIVER CHARACTERISTICS (BUILT IN DISPLAY UNIT)

- 2.1 Transmit Frequency 50 kHz or 200 kHz
- 2.2 Output Power 600 Wrms

3 DIGITAL DISPLAY UNIT

- 3.1 Display Character size 15 or 21 mm H on monochrome LCD
- 3.2 Indication
Ship's speed Fore: ▲**.* knots (+40.0 kt max.)
Aft: ▼**.* knots (-10.0 kt max.)
Distance run *****.** nm
- 3.3 Other Function Diagnostic check

4 TRANSDUCER TYPE AND BEAMWIDTH

- 4.1 50B-6B (50 kHz): 35°
- 4.2 200B-8B (200 kHz): 6°

5 INTERFACE

- 5.1 Serial Input Data IEC61162-1, current loop; 1 port
RMA: L/L, ground track speed, Track
RMC: L/L(GPS), ground track speed, Track, Time
GLL: L/L
GGA: L/L
VTG: Ground track speed,
Track (True/Magnetic selected on menu)
ZDA: Time
- 5.2 Serial Output Data IEC61162-1, output period: 1 sec.; 3 outputs/
1 port
SDDPT: Depth (m), Draft (m)
SDDBT: Depth (ft, m, fa) below transducer
SDDBS: Depth (ft, m, fa) below sea surface
- 5.3 Serial I/O Data RS-232C, 1 port
Output: Depth, clock, L/L, ship's speed, course

- Input: Control command for PC
- 5.4 Alarm (Depth, Power): Contact closure signal, normal open or normal close, 250 VAC/ 200 VDC, 3A max.

6 POWER SUPPLY

24 VDC (-10%, +30%): 20W or
100-115/200-230 VAC, 1 phase, 50/60Hz: 20VA.

7 ENVIRONMENTAL CONDITION

- 7.1 Temperature -15 °C to +55 °C
- 7.2 Relative Humidity 93% or less at 40 °C
- 7.3 Waterproofing Display Unit: IEC IPX5
Distribution Box: IEC IPX2
Matching Box: IEC IPX2
- 7.4 Category of Equipment Units
- Display Unit: protected from the weather
- Distribution Box: protected from the weather
- Matching Box: protected from the weather
- Transducer: Submerged area

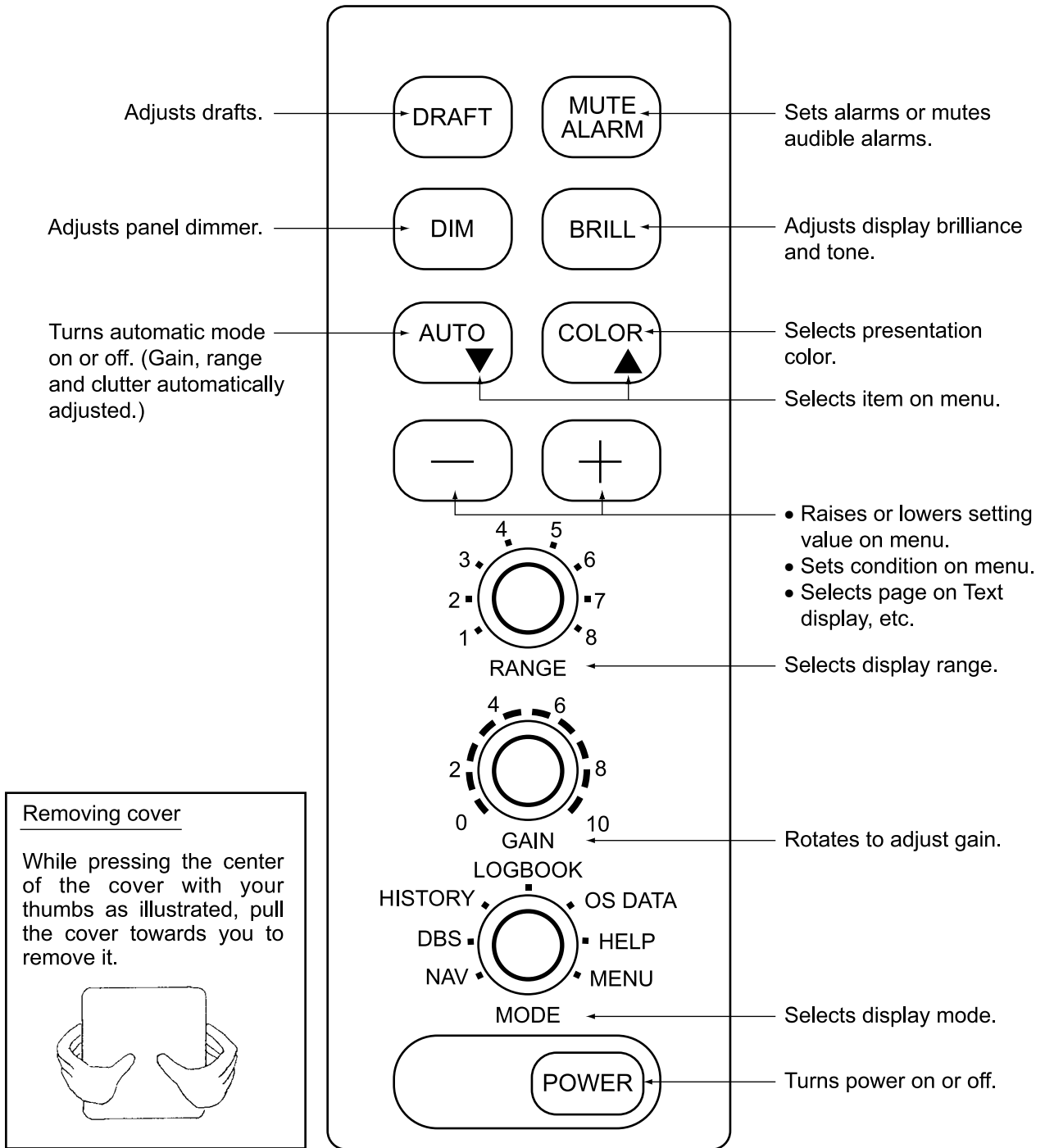
8 COATING COLOR

- 8.1 Display Unit Panel: N3.0
Chassis: 2.5GY5/1.5
- 8.2 Distribution Box/ Matching Box
2.5GY5/1.5

1 OPERATION

1.1 Control Description

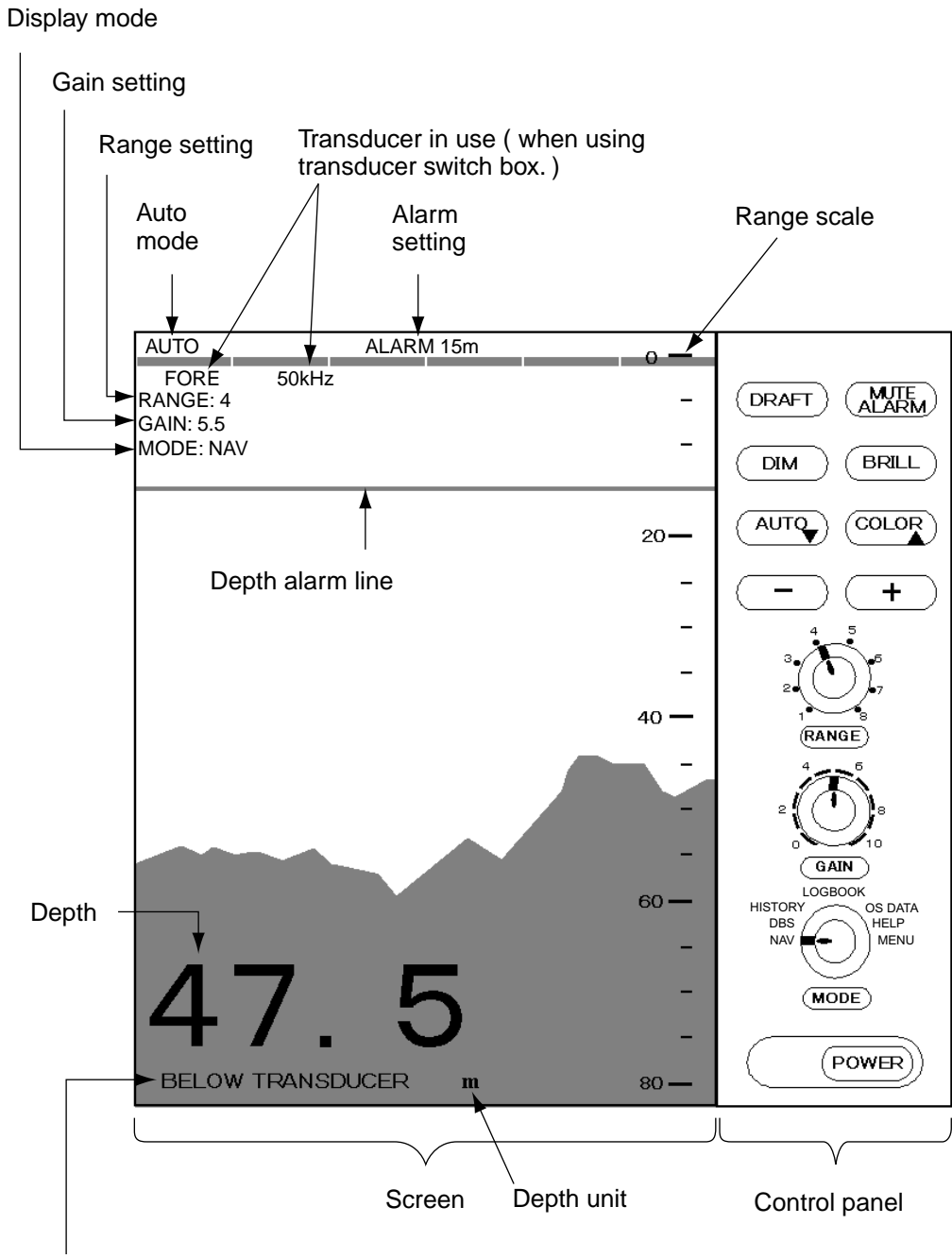
All operation of the FE-700 is carried out with the controls on the front panel of the display unit. Rotary controls respond immediately to your command but some touch keys require the successive operation.



Removing cover

While pressing the center of the cover with your thumbs as illustrated, pull the cover towards you to remove it.

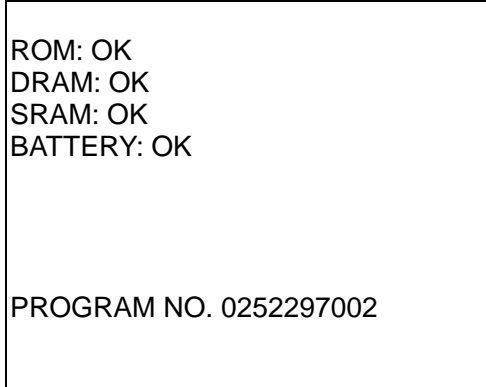
1.2 Indications, Markers



Explanation of depth
(Below transducer, or
below surface)

1.3 Turning On/Off

1. **Turning on:** Press the POWER Switch. Self-test starts, showing the condition of the logic circuits. The program number is displayed.



2. Select a mode with the MODE Selector. The **NAV** position of the selector is recommended for general use. Display color is amber by default but may be customized. The unit of measurement is meters. You can freely select another mode at any time.
3. **Turning off:** Press the POWER Switch again.

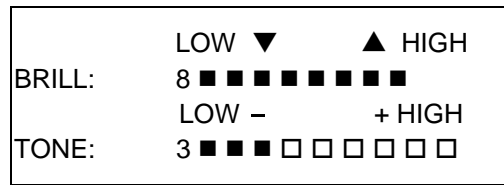
Wait at least 5 s before reapplying the power.

Note: When two transducers are installed, make sure which transducer is used.

Note: When lat/long data input error occurs, "EPFS" ERROR appears on the screen. (EPFS: Electronic Position-Fixing System such as GPS receiver)

1.4 Tone and Brilliance

1. Press the BRILL key. The tone and brilliance setting window appears.

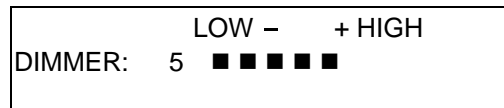


2. Press the [+] or [-] key for desired tone (in reality, Contrast).
3. Press the [▲] or [▼] key for desired brilliance. Pressing the BRILL key also changes the brilliance from minimum to maximum and vice-versa.

Note: Tone or brilliance must be adjusted within 10 seconds after pressing the BRILL key. Otherwise the tone and brilliance window will be erased.

1.5 Panel Dimmer

1. Press the DIM key. The panel dimmer setting window appears.



2. Press the [+] or [-] key for desired illumination of the control panel. Pressing DIM key also changes the illumination level.

1.6 Display Mode

The Mode Selector choose the display mode among NAV, DBS (depth below surface), HISTORY, LOGBOOK, OS DATA, HELP, and MENU.

1.6.1 NAV mode

The depth from the transducer to the seabed (bottom clearance) is shown on the screen. Note “BELOW TRANSDUCER” appears at the bottom of the screen in this mode.

Default is,

Color: Amber
Range: Automatic range switching
Window: 15 minutes
Shallow water alarm: 20 m

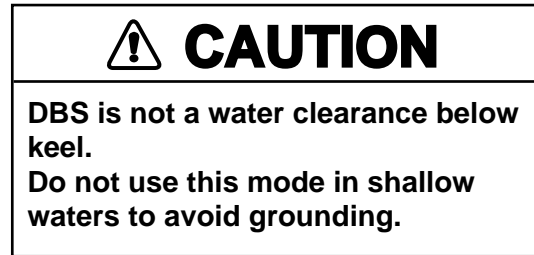
NOTE: These parameters can be customized to your preference and the last setting is used at a next switch-on. This is true on all other modes.

1.6.2 DBS mode

The Depth Below Surface mode provides a draft-adjusted depth reading and will be useful in referencing to the nautical chart. The draft should be adjusted by the DRAFT key according to the actual draft value. If you find any difficulty to check for the draft value, use the NAV mode.

When the DBS mode is selected, the message “Confirm and set ship’s draft to use DBS mode” appears. Confirm ship’s draft and set it by referring to section 1.12.

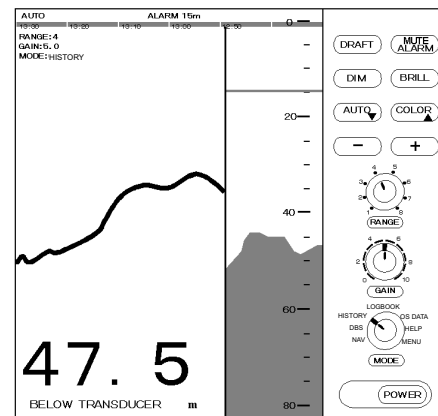
BELOW SURFACE appears at the bottom of the display and the draft value appears at the upper right-hand corner in the DBS mode.



1.6.3 HISTORY mode

This mode provides a mix of Contour and Strata displays. The Contour display can be scrolled over the past 24 h while the right side Strata display (layers of different colors according to reverberation strengths) shows the latest sounding for 5 minutes.

Pressing the [+] or [-] key moves the Contour display forwards or backwards, respectively.



History of the bottom

If the range scale for both the Contour and Strata display must be the same. If they are not, the message “OUT OF RANGE” appears.

The update of the contour data may take max. one minute. Wait for one minute to display accurate contour if you change the range scale.

1.6.4 LOGBOOK mode

The LOGBOOK shows time, depth and own ship position in tabular form in a pop-up window. The logging is selected with the INTERVAL option on the menu among 5 s, 1 min and 2 min. (See section 2.6.)

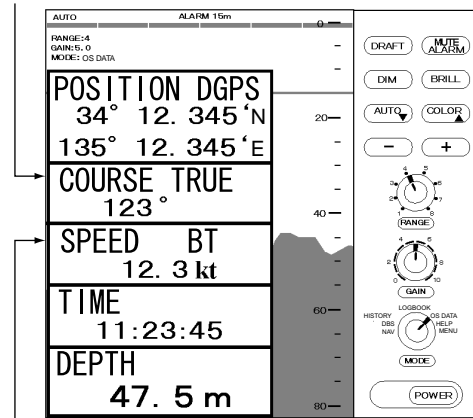
There are 60 pages and the total memory capacity is 720 points. Page 60/60 is the latest data and 1/60 is the oldest data. Pressing [-] or [+] key changes the pages.

TIME	DEPTH	L/L	60/60
11:00:00	47.5		
36°55.012'N			
		135°23.123'E	
11:01:00	47.5	36°55.012'N	
		135°23.123'E	
11:02:00	47.5	36°55.013'N	
		135°23.123'E	
11:03:00	47.5	36°55.013'N	
		135°23.123'E	
11:04:00	47.5	36°55.014'N	
		135°23.123'E	
11:05:00	47.5	36°55.014'N	
		135°23.123'E	

1.6.5 OS DATA mode

This display mode indicates own ship position, GPS-derived course and speed, and time and depth in digital form. You can read the data of your particular interest in large characters. The screen continues to display the sounding data in the background. Part of graphical indication is visible to the right of data slips.

TRUE(true course) or
MAG (magnetic course) appears.



BT means Bottom track

There are two kinds of OS DATA displays: DATA 1 and DATA 2, as selected on the system menu. DATA 1 is the default setting, and it is shown in the figure above.

The DATA 2 display is as below.

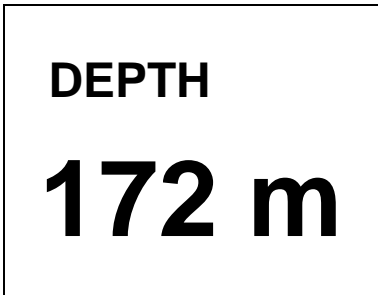
TIME	UTC
11:23:45	
DEPTH	
172 m	

Note: When lat/long data input error occurs in the DATA 1 mode, “EPFS” ERROR appears on the screen. (EPFS: Electronic Position-Fixing System such as GPS receiver)

Enlarging data of interest

You can enlarge one of the data indications as follows:

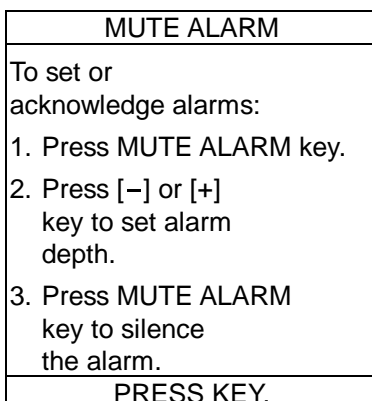
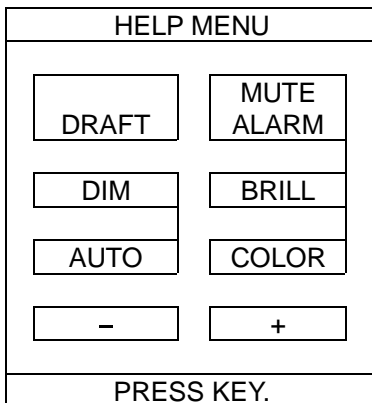
1. Press the [▲] or [▼] key to select the data you want to enlarge. Current section is circumscribed with the blue cursor. For example, select the depth cell.
2. Press the [+] key.



3. To return to the original display, press the [-] key.

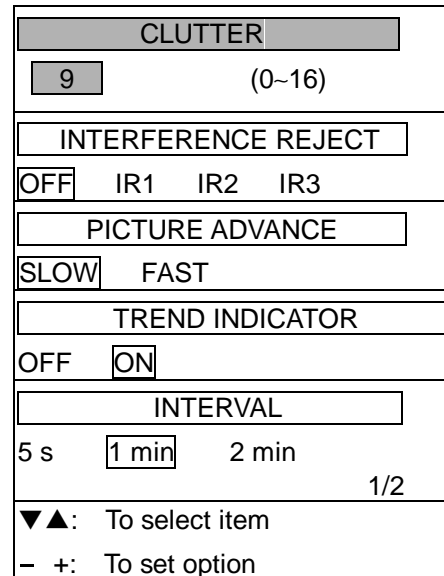
1.6.6 HELP display

This mode provides information about keys. Press desired key to obtain the corresponding information. The example below shows help information for MUTE ALARM.

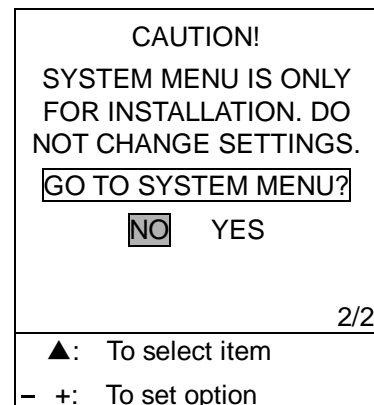


1.6.7 MENU display

The menu provides functions which normally do not require frequent adjustment. For details see Chapter 2.



Press the [▼] key, and the following appears.



1.7 Range Scale

If the depth goes out of the correct display area, increase or decrease the range until the seabed appears near the center of the screen.

Adjust the Range Control, and current range selection is shown in the range display window.

RANGE	5 m
-------	-----

In the AUTO mode, the range scale is automatically adjusted. See section 1.9 for details.

1.8 Gain Control

The GAIN Control adjusts the sensitivity of the receiver. The AUTO mode provides automatic adjustment and you are normally not required to adjust it. Current setting is shown at the upper left-hand corner. Adjust the GAIN Control and the following window appears.

GAIN	5.5
------	-----

Adjust the GAIN Control so that a slight amount of noise remains on the screen. Generally, use a higher gain setting for greater depths and a lower setting for shallower waters. Adjusting range is between 0.0 and 10.0 in 0.5 steps.

1.9 Automatic Operation

The automatic function automatically selects the proper gain, range scale and clutter level according to depth. It works as follows:

- The range changes automatically to locate the bottom on the lower half of the screen. It jumps to one step shallower range when bottom echoes reach a halfway point of the full scale from top and to one step deeper range when they come to the lower edge of the scale.
- The gain is automatically adjusted to display the seabed in specified color.

- Clutter level (on the menu), which works as a threshold control to suppress overall noise, is automatically adjusted.

Note: The AUTO MODE is cancelled whenever the range or the gain is changed.

How to enable/disable automatic operation

1. Press the AUTO key. The AUTO mode window appears.

AUTO MODE	
OFF	ON
- / +: To set option	

2. Press the [+] key to select ON or the [-] key to select OFF.

1.10 Picture Colors

1. Press the COLOR key. The following window appears.

COLOR										
-	1	2	3	4	5	6	7	8	9	+

2. Press the [+] or [-] key to select a number, referring to the table below. (You can see the result of your selection on the display.)

	Background	Seabed	Others marks
1	Monochrome, 8 intensities		
2	Blue	Red infill	6 colors
3	Black	Red infill	6 colors
4	White	Red infill	6 colors
5	Blue	Yellow infill	6 colors
6	Black	Yellow infill	6 colors
7	White	Yellow infill	6 colors
8	Black	7 colors (Strata)	
9	White	7 colors (Strata)	

Monochrome (amber) is the default setting. The Strata display contains multiple colors depending on the reflectivity from underwater objects of the sounding pulses. Red is strongest, followed by brown, orange, yellow, blue, and light blue.

1.11 Shallow Water Alarm

The shallow water alarm sounds when the seabed is shallower than the preset depth. The default in the NAV position is 20 m. You can adjust the alarm depth as below:

Activating/deactivating the alarm

1. Press the MUTE ALARM key to display the depth alarm setting window.

DEPTH ALARM
10 m
- / +: To set option

2. Press the [+] or [-] key to change setting depth. The setting is shown digitally at the top of the screen and graphically key the depth alarm line.

When the alarm is activated, the message "SHALLOW DEPTH ALARM" is displayed at the center on the screen.

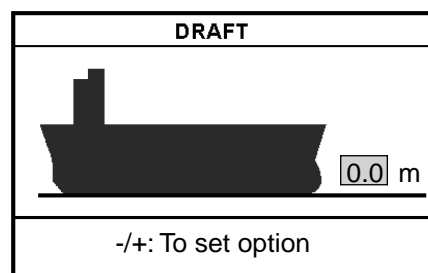
Acknowledging the alarm

You can silence the alarm by pressing the MUTE ALARM key. The message "SHALLOW DEPTH ALARM" moves to upper side of the screen.

1.12 Draft

It is necessary to set the draft to use the DBS display mode, which shows depth below surface.

1. Select DBS with the MODE control.
"Confirm and set ships draft to use DBS mode." appears.
2. Press the DRAFT key to display the draft setting window.



3. Press the [+] key to increase the setting depth and [-] key to decrease it. The setting depth is 0 to 30 m in steps of 0.1 m.
 The above window disappears in 10 seconds.

The draft setting is displayed at the upper right corner and the range scale is shifted according to the draft setting.

2 MENU OPERATION

2.1 Menu Overview

The menu has several functions for advanced operation.

1. Select MENU with the MODE Selector.

CLUTTER	
AUTO	(0~16)
INTERFERENCE REJECT	
OFF	IR1 IR2 IR3
PICTURE ADVANCE	
SLOW	FAST
TREND INDICATOR	
OFF	ON
INTERVAL	
5 s	1 min 2 min
	1/2
▼▲: To select item	
- +: To set option	

2. Press the [▲] or [▼] key to select menu item. As you operate the [▲] or [▼] key, the selected item and its current setting appear in reverse video.
3. Press the [-] or [+] key to select option desired.
4. Set the MODE Selector in another position to close the menu.

2.2 Suppressing Low Level Noise

Light-blue dots may appear overall screen. This is mainly due to dirty water or noise. This noise can be suppressed by adjusting CLUTTER (in reality, Threshold of the amplifier).

When the automatic mode is on, the suppression setting is automatically adjusted. For manual override, do the following:

1. Select MENU with the MODE Selector.
2. Select CLUTTER by pressing the [▲] key.
3. Press the [-] or [+] key to select clutter rejection level desired. The higher the number the higher the degree of suppression. Note that weak echoes may not be displayed when the clutter circuit is on.

2.3 Suppressing Interference

Interference from other acoustic equipment operating nearby or other electronic equipment on your boat may show itself on the display.

To suppress interference, do the following:

1. Select MENU with the MODE Selector.
2. Select INTERFERENCE REJECT by pressing the [▲] or [▼] key.
3. Press the [-] or [+] key to select degree of suppression desired; OFF, IR1, IR2 or IR3. The higher the number the greater the degree of suppression.

Note that oversuppression will weaken the sensitivity.

2.4 Picture Advance

The picture advance speed determines how quickly the vertical scan lines run across the screen.

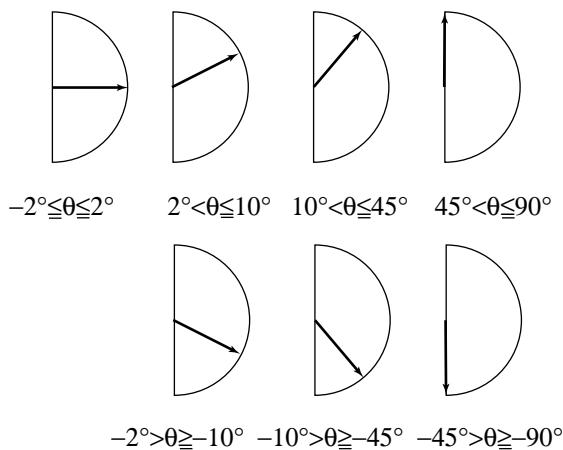
1. Select MENU with the MODE Selector.
2. Select PICTURE ADVANCE by pressing the [▲] or [▼] key.
3. Press the [+] or [-] key to select speed FAST or SLOW, respectively. The advance speed varies with the range scale and the viewing length of 15-16 minutes is available on all ranges (IMO requirements).

Range (m)	Display window (minute)
5, 10, 20	1.8/15 (FAST/SLOW)
40, 100	8/15
200	15/20
400, 800	15/30

2.5 Trend

The future trend of the seabed depths can be predicted over a specified period of time (See page 13). The trend index is set with the item TREND and appears at the top left corner. The default setting is ON.

θ is inclination angle of bottom.



2.6 Interval

The interval for sampling data for the LOGBOOK and HISTORY modes can be set with INTERVAL, among 5 s, 1 min and 2 min. The default setting is 1 min.

TIME	DEPTH	L/L	3/60
11:00:00	47.5	36°55.012'N 135°23.123'E	
11:01:00	47.5	36°55.012'N 135°23.123'E	
11:02:00	47.5	36°55.013'N 135°23.123'E	
11:03:00	47.5	36°55.013'N 135°23.123'E	
11:04:00	47.5	36°55.014'N 135°23.123'E	
11:05:00	47.5	36°55.014'N 135°23.123'E	

In this example, the setting of INTERVAL is 1 minute. That is, the depth and lat/long data are displayed at 1 minute intervals.

3 SYSTEM MENU

3.1 System Menu

The system menu should be set just after installation and is not always necessary to be adjusted. If you change any items of the system menu or even if you open the system menu, the sounding picture will be cleared. There are three menus: 1,2,and 3.

1. Select MENU with the MODE Selector.

CLUTTER	
9	(0~16)
INTERFERENCE REJECT	
OFF	IR1 IR2 IR3
PICTURE ADVANCE	
SLOW	FAST
TREND	
OFF	ON
INTERVAL	
5 s	1 min 2 min
	1/2
▼▲: To select item	
- +: To set option	

2. Press the [▼] key several times to display following window.

CAUTION!	
SYSTEM MENU IS ONLY FOR INSTALLATION. DO NOT CHANGE SETTINGS.	
GO TO SYSTEM MENU?	
NO	YES
	2/2
▲ : To select item	
- +: To set option	

3. Select YES by pressing the [+] key.
Confirmation message "ARE YOU SURE?" appears.

4. Press the [+] key again.

The system menu 1 appears.

5. With the cursor selecting MENU SELECT, operate the [-] or [+] key to select system menu desired; 1, 2 or 3.

SYSTEM MENU 1	
MENU SELECT	1 2 3
DEPTH UNIT	m ft fa
SPEED UNIT	kt MPH km/h
COURSE	TRUE MAG
BOTTOM LOST	OFF ALARM
INTERFACE	1:95 1:98 NMEA
ALARM SOUND	1 2 3
OS DATA	DATA1 DATA2
LANGUAGE	English
▼▲: To select item	
- +: To set option	
Select other mode to exit.	

↓ Press [+] at menu 1.
↑ Press [-] at menu 2.

SYSTEM MENU 2	
MENU SELECT	1 2 3
TIME ADJUST	INTERNAL EXTERNAL
DAY	1
MONTH	JAN
YEAR	2001 (~2100)
HOUR	0 (0~23)
MINUTE	0 (0~59)
SECOND	0 (0~59)
01 JAN 2001 00:00:00	
▼▲: To select item	
- +: To set option	
Select other mode to exit.	

↓ Press [+] at menu 2.
↑ Press [-] at menu 3.

SYSTEM MENU 3	
MENU SELECT	1 2 3
BASIC RANGE1	5 (2~800)
RANGE2	10 m
RANGE3	20
RANGE4	40
RANGE5	100
RANGE6	200
RANGE7	400
RANGE8	800
TREND	1 min
KEEL DISTANCE	0.0 m

3.2 System Menu 1

DEPTH UNIT: Selects unit of depth measurement among meters, feet, or fathoms. Default setting is meters.

If "ft" or "fa" is selected, the depth unit is shown in red characters.

SPEED UNIT: Selects unit of speed measurement among knots, statute miles per hour, or kilometers per hour. Default setting is knots. Requires speed data, from external device.

COURSE: Selects heading reference; true or magnetic. Default setting is TRUE.

BOTTOM LOST: Turns on or off the bottom loss warning. ON sounds the alarm if the bottom signal is not detected. Default setting is alarm ON.

INTERFACE: Selects I/O signal format between the FE-700 and external equipment; IEC format "1:95" (1995 version) or "1:98" (1998 version), or NMEA format. Default setting is IEC "1:98". When selecting the "1:98", DPT has max. range in use (See page 24).

	Output	Input
IEC 61162-1	DPT	RMA, RMC GLL, VTG ZDA, GGA
NMEA 0183	DBT (Ver.1.5) DBS (Ver.1.5) DPT (Ver.2.0)	RMA, RMC GLL, VTG ZDA, GGA

ALARM SOUND: Selects audio alarm sound among 1, 2 or 3. Default setting is 1.

- 1: Continuous sound
- 2: Intermittent sound; 0.5 s on and 0.5 s off.
- 3: Intermittent sound; 1 s on and 1 s off.

OS DATA: Selects own ship data display mode; DATA 1 or DATA 2. DATA1 is the default setting. If a navigation device is not connected to the FE-700, select DATA 2.

LANGUAGE: Currently English is only available.

3.3 System Menu 2

TIME ADJUST: Selects internal clock or external clock (UTC clock). Default setting is INTERNAL. For INTERNAL, set current day, month, year, hour, minute and second with [+], [-], [▼] or [▲] key. The setting clock appears and it counts upward.

SYSTEM MENU 2		
MENU SELECT	1	2 3
TIME ADJUST	INTERNAL	EXTERNAL
DAY	1	
MONTH	JAN	
YEAR	2001	(~2100)
HOUR	0	(0~23)
MINUTE	0	(0~59)
SECOND	0	(0~59)
01 JAN 2001 00:00:00		
▼▲: To select item		
- +: To set option		
Select other mode to exit.		

If EXTERNAL is selected, the screen changes as follows.

SYSTEM MENU 2		
MENU SELECT	1	2 3
TIME ADJUST	INTERNAL	EXTERNAL
TIME DIFFERENCE	AUTO	MANUAL
0:22:40		
▼▲: To select item		
- +: To set option		
Select other mode to exit.		

TIME DIFFERENCE: Selects auto (UTC) or manual. Auto uses the time difference in ZDA (IEC 61162-1). In manual, it is necessary to enter the time difference in hours and minutes.

SYSTEM MENU 2	
MENU SELECT	1 <u>2</u> 3
TIME ADJUST	INTERNAL <u>EXTERNAL</u>
TIME DIFFERENCE	AUTO <u>MANUAL</u>
TIME DIFF HOUR	<u>0</u> (0~13)
TIME DIFF MIN	<u>0</u> (0~59)
TIME DIFF SIGN	- , <u>+</u>
0:22:40	
▼▲: To select item	
- +: To set option	
Select other mode to exit.	

3.4 System Menu 3

RANGE 1- 8: Activates or deactivates specific range scales. Default ranges are 5, 10, 20, 40, 100, 200, 400, and 800 (meters). Setting area is 2 m to 800 m. The ranges 20 m and 200 m can not be changed. They are essential in this equipment.

Note: Ranges must be set in numerical order. For example, if range 1 is 5 m and range 3 is 20 m, range 2 should be between 6 and 19 m.

Trend: The trend index shows the probable bottom shape over a specified time within 1-10 minutes. The default setting is 1 minute. Set the Trend time with [+] or [-].

KEEL DISTANCE: Sets the vertical distance between the transducer and keel in meters, and has no affect on the display. This value (except zero) is used for “offset from transducer” in the sentence “DPT” of IEC 61162-1. Any value other than zero invalidates the draft value. When this value is zero (default setting), the draft value is valid.

4 ECHO QUALITY SETTING

This chapter describes functions useful for improving echo sounding performance.

4.1 Demonstration Display

The demonstration program shows how the FE-700 works.

1. Turn off the equipment.
2. Press the POWER Switch while pressing any key. Release the key when the following EXTENSION MODE display appears.

EXTENSION MODE	
+ :	TRANSDUCER SETTING
- :	TEST
▲ :	CLEAR MEMORY
▼ :	DEMONSTRATION
SELECT MODE	

3. Press the [▼] key to select DEMONSTRATION.

DEMONSTRATION	
<input checked="" type="checkbox"/>	OFF
<input type="checkbox"/>	ON
-/+ :	To set option
▼ :	EXTENSION MODE

4. Press the [+] key to select ON.
 5. Reset the power. "DEMO" appears above the depth indication on the echo sounder displays and at the top right-hand corner on the data and graphic displays.
- To return to the normal operation, select OFF at step 4 above. Restart the display unit after waiting 5 s.

4.2 Transducer Setting

After installing the equipment, set the transducer as follows.

1. Press the [+] key at the EXTENSION MODE display. The following window appears.


TRANSDUCER SETTING				
XDR	FORE	<input type="text" value="N/A"/>	50kHz	200kHz
XDR	AFT	<input type="text" value="N/A"/>	50kHz	200kHz
▼▲: To select item				
- +: To set option				

2. Set as follows by using [▲] or [▼] to select an item and [+] or [-] to set option.
 - a) If only one transducer is installed, set XDR FORE field to 50 kHz or 200 kHz, according to actual installation. Leave the XDR AFT field as "N/A."
 - b) If two transducers are installed via the switch box EX-8, set XDR FORE field and XDR AFT field to 50 kHz or 200 kHz, according to actual installation.
3. Reset the power.

Note: The default settings in the TRANSDUCER SETTING window are N/A. At the first power-up after installation, the window appears to set transducer(s).

4.3 Bottom Level

If the depth indication is unstable or the seabed cannot be displayed steadily notwithstanding the adjustment of the control panel, you may adjust the bottom echo level.

 CAUTION
<p>If the level is set too low, the FE-700 may not be able to distinguish the bottom from fish echo and the depth indication may be unstable and if set to high the depth indication does not appear.</p>

1. Press the MUTE ALARM key three times at the EXTENSION MODE. The start-up screen appears and shortly thereafter the BOTTOM LEVEL display appears.

BOTTOM LEVEL
200kHz = 80 (20~200)
--+: 200kHz*

*: Either 200 kHz or 50 kHz is displayed depending on which frequency is used.

2. Set the level with the [+] or [-] key. The default level is 80.
3. Press the POWER switch to finish the adjustment. Wait about 5 s and then turn on the power again.

4.4 TVG Level

TVG (Time Varied Gain) compensates for propagation attenuation of the ultrasonic waves, reducing surface noise to provide a smooth display. The TVG lowers receiver sensitivity at the time of pulse emission and gradually increases it with time, thereby making objects of same reflectivity at different depths appear at the same intensity or colors on the display. The TVG working depth is down to approximately 150 m on the 200 kHz system and 350 m on the 50 kHz

system. Outside this range the echoes from the seabed and fish schools are received in full level. There is no perceivable deterioration in performance.

1. Press the DRAFT key three times at the EXTENSION MODE display. The TVG SELECT window appears.

TVG SELECT
200kHz = 5 (0~9)
--+: 200kHz

2. Set the TVG curve with [+] or [-]. The default level is 5. Attenuation compensation curve is at 20LogR curve.
3. Press the POWER switch to finish the adjustment. Wait 5 s, and then turn it on again.

4.5 Echo Offset

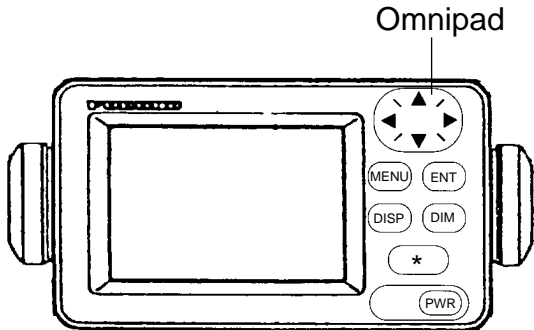
The echo offset feature functions to compensate for too weak or too strong echo level. If the on-screen echo level appears to be too weak or too strong and the level cannot be adjusted satisfactorily with the GAIN control, do the following to adjust echo level.

1. Press the DIM key three times at the EXTENSION MODE display. The ECHO OFFSET screen appears.

ECHO OFFSET
200kHz: 0 (-99~+99)
--+: 200kHz

2. Set the offset with [+] or [-]. The default value is 0.
3. Press the POWER switch to finish the adjustment. Wait about 5 s and then turn it on again.

5 OPERATION OF DIGITAL DEPTH INDICATOR FE-720 (OPTION)



The Digital Depth Indicator FE-720 is an optional remote display. The panel illumination can be locally adjusted on the control panel or on the optional hand dimmer box.

5.1 Basic Operation

5.1.1 Turning on

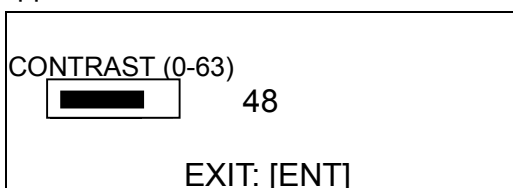
Press the POWER key. The unit beeps and starts up with the last-used display. To turn off the unit, press the POWER key again.

5.1.2 Adjusting panel dimmer

1. Press the DIM key.
2. Press [◀] to increase the dimmer or [▶] to decrease it. The default is level 4.
3. Press the ENT key to finish the adjustment.

5.1.3 Adjusting Contrast

1. Press the [*] key. The following window appears.



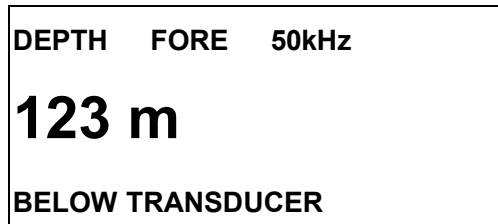
2. Press [◀] or [▶] until the required value is reached. The range of adjustment is from 0 (Min.) to 63 (Max.). The default is 48.
3. Press the ENT key to set.

Note: The contrast is automatically set to the default when you turn on the power.

5.1.4 DEPTH MODE

Depths are read either below transducer (keel) or below seaface irrespective of the main display. Select the mode as below:

1. Press the DISP key to select the wanted mode. The mode changes as below with each press.



Depth below transducer



Depth below surface. Draft is determined on the main Display Unit FE-701.

*: If the keel distance is set (refer to page 13.) BELOW KEEL is displayed instead of the BELOW SURFACE.

5.2 Menu Operation

5.2.1 Dimmer control

The dimmer is controlled either with the DIM key, or the optional Dimmer Controller. The method of control must be selected on the menu.

1. Press the MENU key to display the main menu.

MENU	
DIM CONTROL	PANEL ONLY
ゲンゴ/LANG.	ENGLISH
UNITS	m
ALARM SET	ON
TEST	

2. Press [▲] or [▼] to select DIM CONTROL.
3. Press the ENT key. The following window appears.

MENU	
DIM CONTROL	PANEL ONLY
ゲンゴ/LANG.	PANEL ONLY
UNITS	EXT CONTROLLER
ALARM SET	EXT DISP
TEST	

4. Press [▲] or [▼] to select option desired.

PANEL ONLY: The illumination of the control panel is adjusted with the DIM key.

EXT CONTROLLER: Illumination of control panel is adjusted with the optional dimmer controller (hand dimmer box). The DIM key is inoperative.

EXT DISP: Not used.

5. Press the ENT key to set.
6. Press the MENU key to finish.

5.2.2 Selecting language

The language in use on the screen is either English or Japanese.

1. Press the MENU key to display main menu.
2. Press [▲] or [▼] to select the ゲンゴ/LANG.
3. Press the ENT key. The following window appears.

ENGLISH
ワブン

4. Press [▲] or [▼] to select appropriate option. The default is English.
5. Press the ENT key to set.
6. Press the MENU key to finish.

5.2.3 Selecting the unit of depth measurement

The unit of depth measurement is separately selected from the Main Display FE-701.

1. Press the MENU key to display main menu.
2. Press [▲] or [▼] to select the UNITS.
3. Press the ENT key. The following window appears.

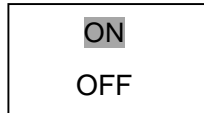
m
ft
fa

4. Press [▲] or [▼] to select unit. The default is meter (m).
5. Press the ENT key to set.
6. Press the MENU key to finish.

5.2.4 Alarm

You can set turn alarm on or off. In the ON mode, if the main display unit activates the alarm, the FE-720 also.

1. Press the MENU key to display main menu.
2. Press [▲] or [▼] to select ALARM.
3. Press the ENT key. The following window appears.



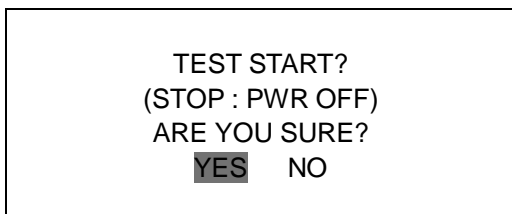
4. Press [▲] or [▼] to select appropriate option. The default is ON.
5. Press the ENT key to set.
6. Press the MENU key to finish.

If the alarm sounds, press any key to silence it.

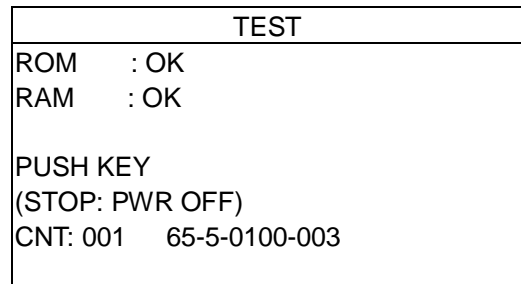
5.3 Diagnosis

The diagnostic test checks ROM, RAM, keys and LCD of the FE-720.

1. Press the MENU key to display main menu.
2. Press [▲] or [▼] to select TEST.
3. Press the ENT key. The following window appears.

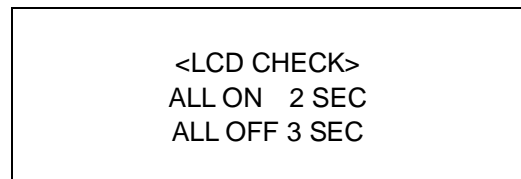


4. With YES selected, press the ENT key to start the test. The equipment tests the ROM and RAM, displaying the results as OK or NG (No Good). If NG appears, contact your dealer for advice.



5. After "PUSH KEY" is displayed, press each key one by one. The name of the key pressed momentarily appears if the key is functioning properly.

The display shows the following message to inform you that the program is now going to check the LCD.



The whole display brightens for 2 seconds then turns off for 3 seconds. Test repeats. CNT, which is number of times the test has been consecutively executed, is counted up.

6. To stop the test, turn off the power.

5.4 Factory Setting

You can restore default settings to start operation anew. Press the POWER switch while pressing [▲]. The message "RESET BACKUP DATA!" appears. After a while, all default settings are restored and the depth indication appears.

6 MAINTENANCE, TROUBLESHOOTING



WARNING

Do not open the cover.

There are no user-serviceable parts inside. Refer any repair work to a qualified technician.

6.1 Checking

Regular maintenance is essential for good performance. Checking the items listed in the table below on a regular basis will keep the equipment in good shape for years to come.

Item	Action
Cable run	If conductors are exposed, replace cable.
Power cable, transducer cable plug	If loosened, tighten.
Display unit ground	If corroded, clean.
Ship's mains voltage	If out of rating, correct problem.

6.2 Cleaning the Display Unit

Dust or dirt on the display unit should be removed with a soft cloth. If desired a water-moistened cloth may be used. Do not use chemical cleaners; they can remove paint and markings.

6.3 Transducer Maintenance

Marine life on the transducer face will result in a gradual decrease in sensitivity. Check the transducer face for cleanliness each time the ship is dry-docked. Carefully remove any marine life with a piece of wood or fine-grade sandpaper.

6.4 Replacing the Fuse, Battery

If a fuse blows, find the cause before replacing it. Use only designated fuses. Using the wrong fuse will damage the unit and void the warranty.

Three types of fuses are used in the distribution box FE-702.

For Display Unit : 3 A x 1 pc (24 VDC)

For Digital Depth Indicator: 0.5 A x 2 pcs

For AC input: 1 A x 2 pcs

The Digital Depth Indicator FE-720 uses one fuse of 1 A, which is inserted in the positive line of interconnection cable.

A battery installed on a circuit board inside the display unit preserves data when the power is turned off. The life of the battery is about three years. When the battery voltage is low, "battery" NG appears at the self-test. When this happens, contact your dealer to request replacement of the battery.

	TYPE	Code Number
Lithium Battery	CR2450-F2 ST2	000-133-495

6.5 Troubleshooting

The table below provides simple troubleshooting procedures which you may follow to restore normal operation. If you cannot restore normal operation, contact your dealer.

SYMPTOM	PROBABLE CAUSES	REMEDY
No picture; no reading measure	Low power supply	Check the supply voltage.
	Fuse blown	Replace the fuse.
	Power cable damaged	Check the cable and repair.
No echo sounding picture	Transducer cable damaged	Repair the cable.
	Transducer cable connection loosened	Tighten the connections.
	Transmitter not working	Make sure the maximum output power is selected. (See section 3.2 System Menu 1.)
Irregular display	Low sensitivity	Increase the Gain by turning the GAIN control clockwise.
	Low reflectivity from seabed	Suspect muddy seabed.
	Marine life on transducer	Remove marine life from the transducer when dry docked.
Loss of seabed display	Out of range	Check the range scale setting.
	Air bubbles caused by going astern or running over other ship wakes	This is normal, it is not a sign of equipment trouble.
Heavy noise	Wrong installation place of transducer	Find cause of noise. Relocate the transducer if noise persists.
	Other echo sounders nearby	If more than one echo sounder is working on the ship, there is no ideal measure to cure the problem.
Surface noise	Aeration in near surface area	Not an equipment problem.
	Rough weather	Not an equipment problem.

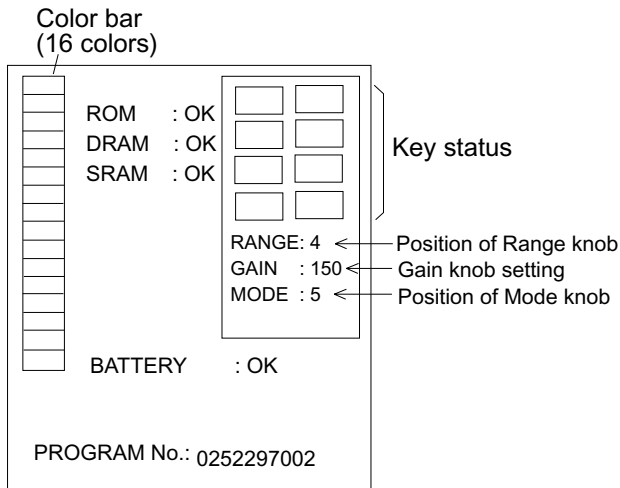
6.6 Diagnostic Test

The diagnostic test checks the ROM, RAM, color bar and keyboard for proper operation.

1. Turn on the power while pressing any key. Release the keys when the following display appears.

EXTENSION MODE	
+	TRANSDUCER SETTING
-	TEST
▲	CLEAR MEMORY
▼	DEMONSTRATION
SELECT MODE	

2. Press the [-] key.

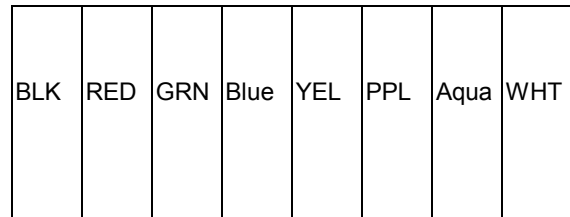
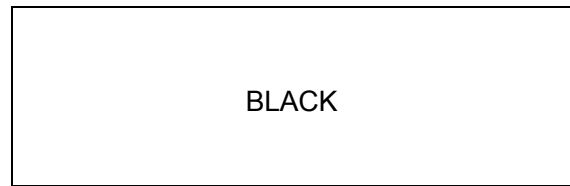


3. The ROM, DRAM, SRAM and internal battery are checked and the results are displayed as OK or NG (No Good). If NG appears, contact your dealer for advice.
4. Press and release each key (except the POWER switch) one by one. If the key is normal, its on-screen location lights in black while the key is pressed.
5. Operate the controls. The RANGE and MODE control setting indications should be the same as actual control settings. The GAIN control setting indication should be between 0 and more than 230.
6. Press the POWER SWITCH to finish. Turn on the power again to resume operation.

6.7 Test Pattern

The test pattern is used to check color performance.

1. Turn on the POWER SWITCH while pressing any key.
2. Press the BRILL key three times. Press the BRILL key again to change the test pattern as below.



3. Press the BRILL key again to return to the EXTENSION MODE menu.

6.8 Clearing the Memory

All menu settings can be cleared to start afresh. All default menu settings are restored when the memory is cleared. For your reference all default settings are shown in the menu tree at the end of this manual.

1. Turn on the power while pressing any key. Release the keys when the EXTENSION MODE menu appears.
2. Press the [▲] key. The following window appears.

Restore factory settings.

+ : YES

- : NO

3. Press the [+] key to clear the memory. The following window appears.

DON'T TURN POWER OFF
UNTIL COMPLETED MEMORY CLEAR

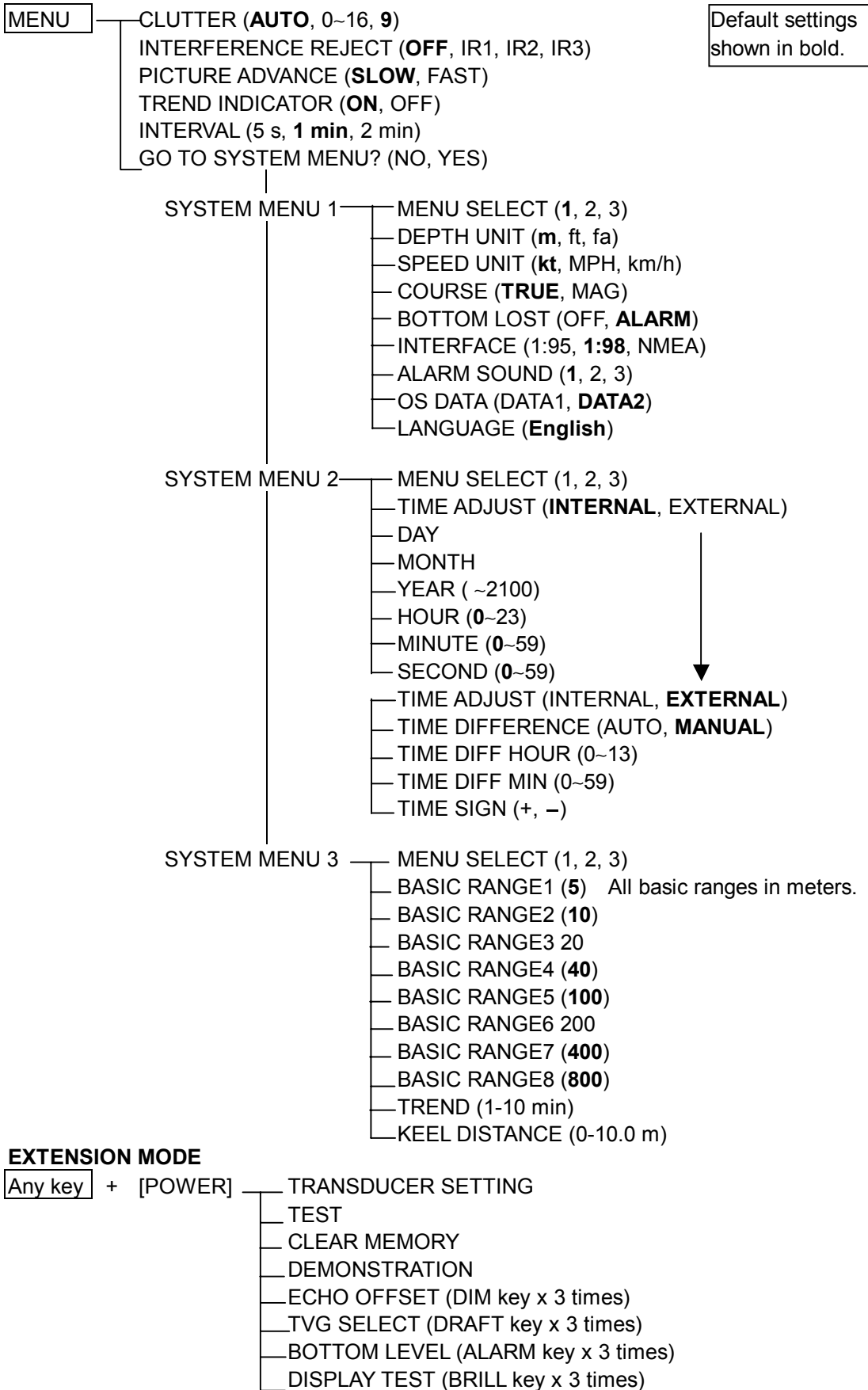
Then the following display appears after the memory is cleared.

Set data to default.

4. After data is cleared, the EXTENSION MODE menu appears.

Note: The setting for the items LANGUAGE and TRANSDUCER in the system menu is not disturbed when the memory is cleared.

7 MENU TREE



8 DIGITAL INTERFACE (IEC 61162-1 EDITION 2)

1. I/O Sentences

Input sentences of channel 1 (NAV IN)

RMA, RMC, GLL, GGA, VTG, ZDA

Output sentences of channel 2 (NAV OUT)

DBT, DPT, DBS (NMEA 0183)

Transmission interval

1 s for any sentence

Data transmission

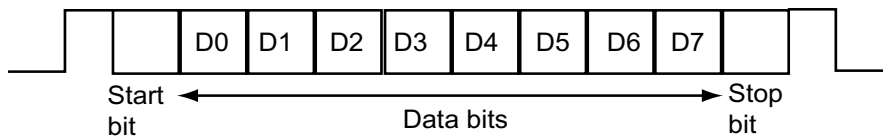
Data is transmitted in serial asynchronous form in accordance with the standard referenced in 2.1 of IEC 61162-1. The first bit is a start bit and is followed by data bits, least-significant-bit as illustrated below.

The following parameters are used:

Baud rate: 4800

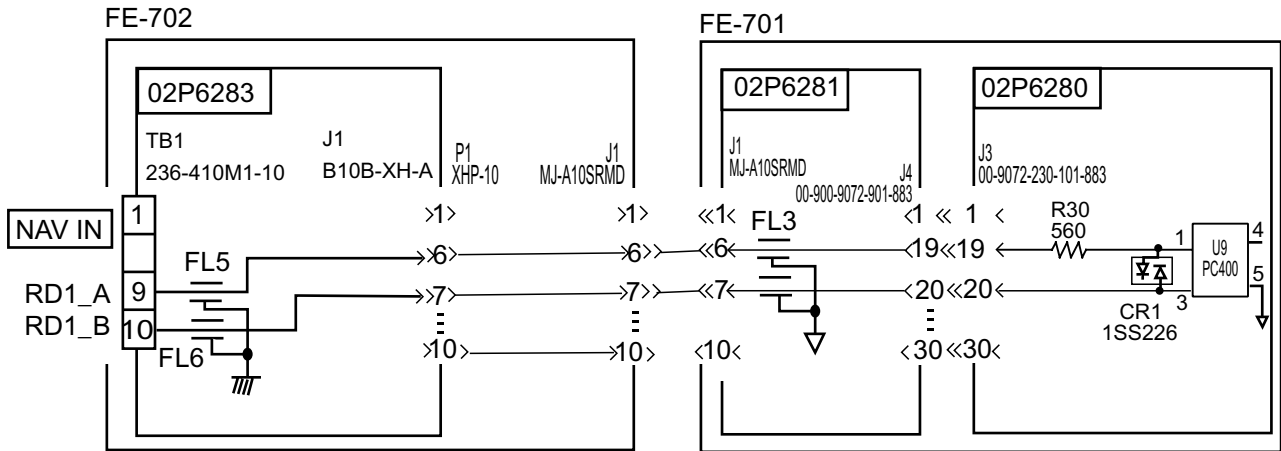
Data bits: 8 (D7 = 0), parity none

Stop bits: 1



2. Schematic Diagrams

NAV IN port (listener)



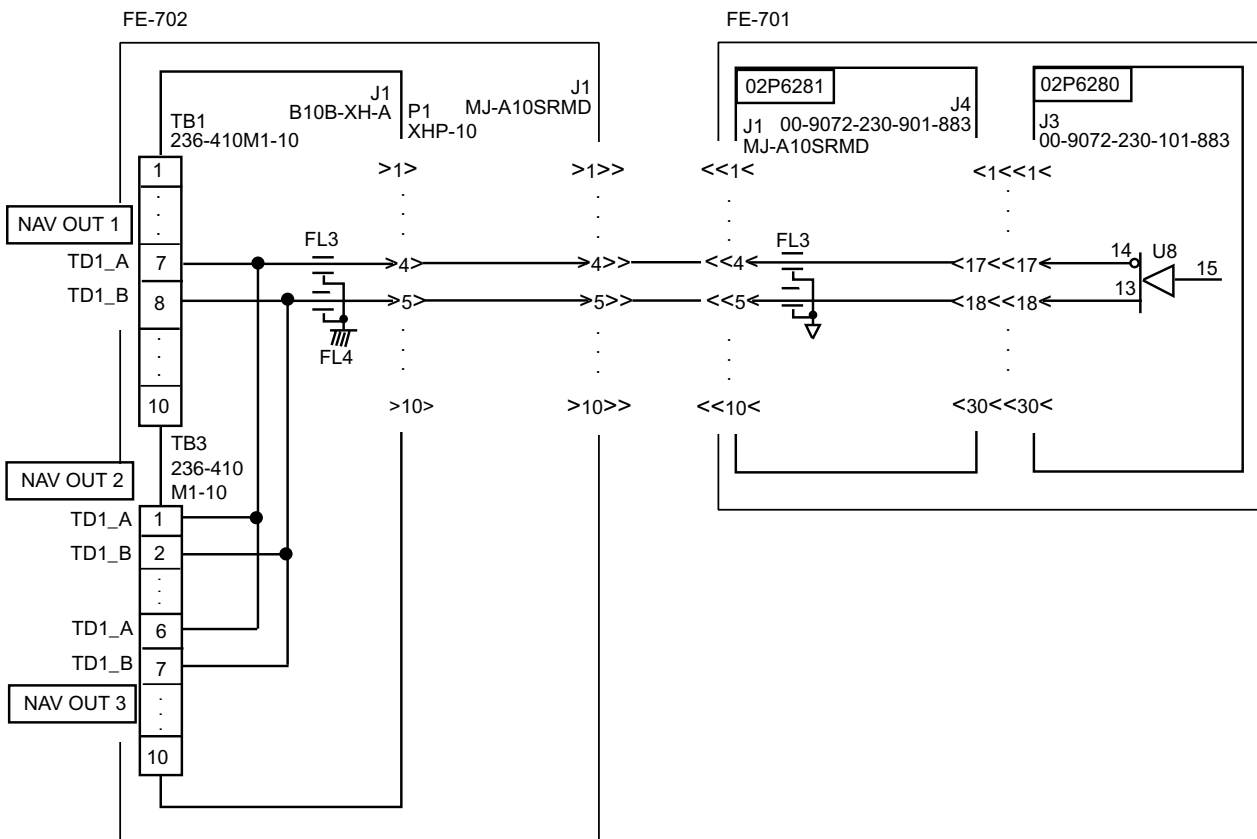
Load requirements as listener

Isolation: Optocoupler

Input Impedance: 560 ohms

Max. Voltage: $\pm 15V$

NAV OUT ports

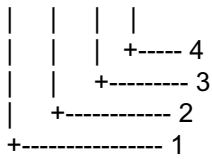


Total output for NAV OUT ports: Max. 20 mA

3. Sentence Description

DPT - Depth

\$--DPT,x.x,x.x,x.x*hh<CR><LF>



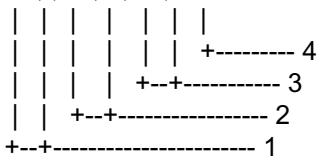
1. Water depth relative to transducer, in meters
2. Offset from transducer, in meters(see notes 1 and 2)
3. Maximum range scale in use
4. Checksum

NOTE1 "positive"=distance from transducer to water-line.
 "-"=distance from transducer to keel.

NOTE2 For IEC applications the offset should always be applied so as to provide depth relative to the keel.

DBS – Depth below surface

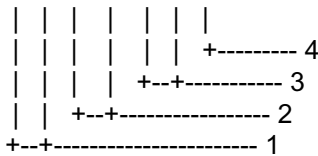
\$--DBS,x.x,f,x.x,M,x.x,F*hh<CR><LF>



1. Water depth, feet
2. Water depth, m
3. Water depth, fathoms
4. Checksum

DBT – Depth below transducer

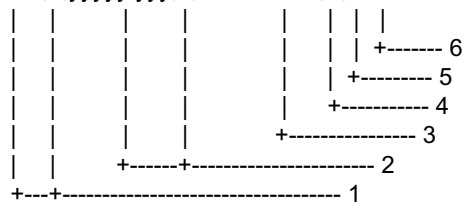
\$--DBT,x.x,f,x.x,M,x.x,F*hh<CR><LF>



1. Water depth, feet
2. Water depth, m
3. Water depth, fathoms
4. Checksum

GLL - Geographic position - latitude/longitude

\$--GLL,III.III,a,yyyyy.yyy,a,hhmmss.ss,A,a*hh<CR><LF>



1. Latitude, N/S
2. Longitude, E/W
3. UTC of position
4. Status: A=data valid, V=data invalid
5. Mode indicator(see note)
6. Checksum

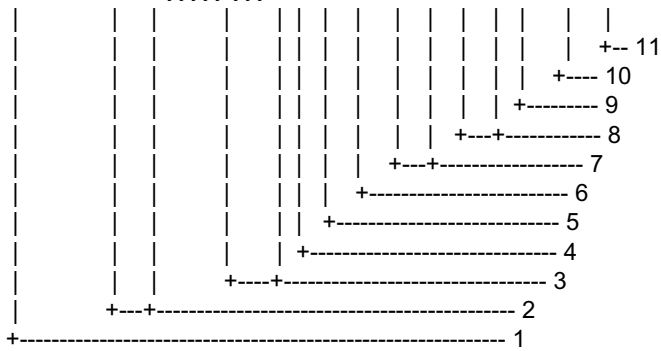
NOTE Positioning system Mode indicator:

- A = Autonomous
- D = Differential
- E = Estimated (dead reckoning)
- M = Manual input
- S = Simulator
- N = Data not valid

The Mode indicator field supplements the Status field. The Status field shall be set to V=invalid for all values of Operating Mode except for A=Autonomous and D=Differential. The positioning system Mode indicator and Status field shall not be null fields.

GGA - Global positioning system (GPS) fix data

\$--GGA,hhmmss.ss,llll.lll,a,yyyyy.yyy,a,x,xx,x.x,x.x,M,x.x,M,x.x,xxxx*hh<CR><LF>



1. UTC of position
2. Latitude, N/S
3. Longitude, E/W
4. GPS quality indicator (see note)
5. Number of satellite in use,00-12, may be different from the number in view
6. Horizontal dilution of precision
7. Antenna altitude above/below mean sealevel, m
8. Geoidal separation, m
9. Age of differential GPS data
10. Differential reference station ID, 0000-1023
11. Checksum

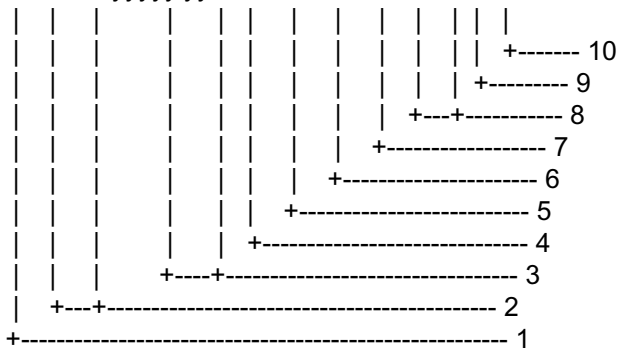
NOTE

- 0 = fix not available or invalid
- 1 = GPS SPS mode, fix valid
- 2 = differential GPS, SPS mode, fix valid
- 3 = GPS PPS mode, fix valid
- 4 = Real Time Kinetic. Satellite system used in RTK mode with fixed integers
- 5 = Float RTK. Satellite system used in RTK mode with floating fingers
- 6 = Estimated (dead reckoning) mode
- 7 = Manual input mode
- 8 = Simulator mode

The GPS quality indicator shall not be a null field.

RMA - Recommended minimum specific LORAN-C data

\$--RMA,A,III.III,a,yyyyy.yy,a,x.x,x.x,x.x,x.x,x.x,a*hh<CR><LF>



1. Status: A=data valid, V=blink, cycle or SNR warning
2. Latitude, degrees N/S
3. Longitude, degrees E/W
4. Time difference A, microseconds
5. Time difference B, microseconds
6. Speed over ground, knots
7. Course over ground, degrees true
8. Magnetic variation(see note 1),degree E/W
9. Mode indicator(see note 2)
10. Checksum

NOTE 1 - Easterly variation(E) subtracts from true course
 Westerly variation(W) adds to true course

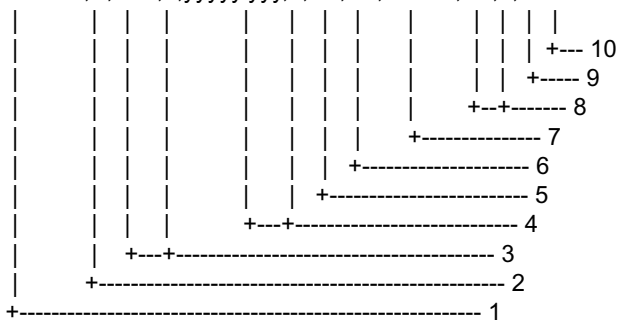
NOTE 2 Positioning system Mode indicator:

- A = Autonomous
- D = Differential
- E = Estimated (dead reckoning)
- M = Manual input
- S = Simulator
- N = Data not valid

The Mode indicator field supplements the Status field. The Status field shall be set to V=invalid for all values of Operating Mode except for A=Autonomous and D=Differential. The positioning system Mode indicator and Status field shall not be null fields.

RMC - Recommended specific GPS/TRANSIT data

\$--RMC,hhmmss.ss,A,lll.lll,a,yyyyy.yyy,a,x.x,x.x,xxxxxx,x.x,a*hh<CR><LF>



1. UTC of position fix
2. Status: A=data valid, V=navigation receiver warning
3. Latitude, N/S
4. Longitude, E/W
5. Speed over ground, knots
6. Course over ground, degrees true
7. Date: dd/mm/yy
8. magnetic variation, degrees E/W
9. Mode indicator(see note)
10. Checksum

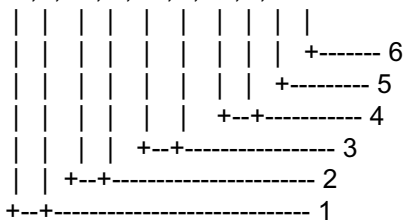
NOTE Positioning system Mode indicator:

- A = Autonomous
- D = Differential
- E = Estimated (dead reckoning)
- M = Manual input
- S = Simulator
- N = Data not valid

The Mode indicator field supplements the Status field. The Status field shall be set to V=invalid for all values of Operating Mode except for A=Autonomous and D=Differential. The positioning system Mode indicator and Status field shall not be null fields.

VTG- Course over ground and ground speed

\$--VTG,x.x,T,x.x,M,x.x,N,x.x,K,a*hh<CR><LF>



1. Course over ground, degrees true
2. Course over ground, degrees magnetic
3. Speed over ground, knots
4. Speed over ground, km/h
5. Mode indicator(see note)
6. Checksum

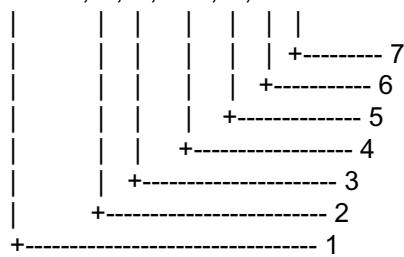
NOTE Positioning system Mode indicator:

- A = Autonomous
- D = Differential
- E = Estimated (dead reckoning)
- M = Manual input
- S = Simulator
- N = Data not valid

The positioning system Mode indicator field shall not be a null field.

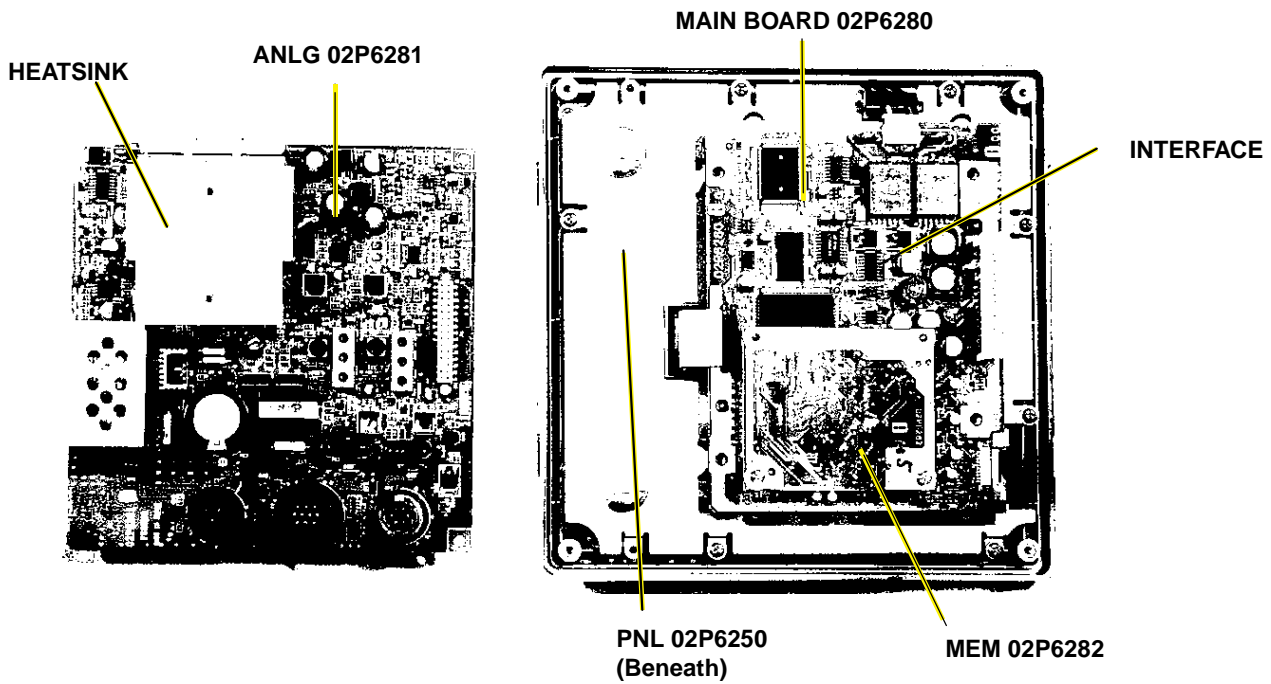
ZDA - Time and date

\$--ZDA,hhmmss.ss,xx,xx,xxxx,xx,xx*hh<CR><LF>

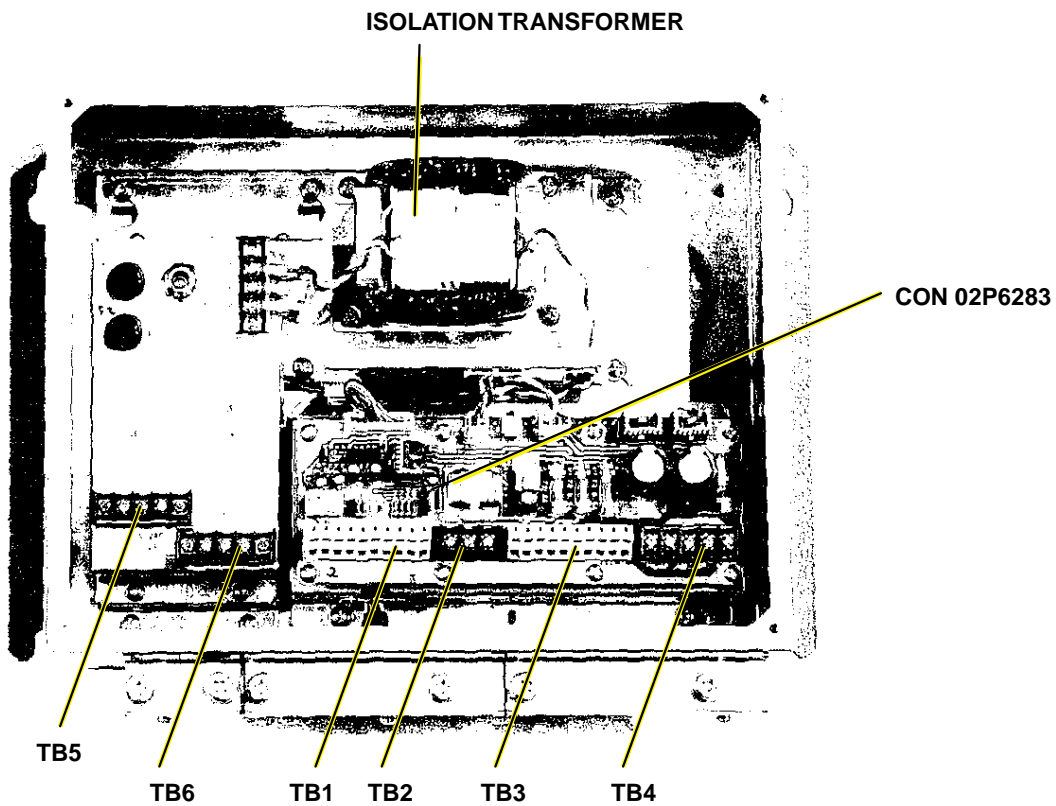


1. UTC
2. Day, 01 to 31(UTC)
3. Month, 01 to 12(UTC)
4. Year(UTC)
5. Local zone hours, 00h to +-13h
6. Local zone minutes, 00 to +59
as local hours
7. Checksum

9 PARTS LOCATION, PARTS LIST



MAIN DISPLAY UNIT FE-701, INSIDE VIEW
(SHIELD COVER REMOVED)



DISTRIBUTION BOX FE-702,
INSIDE VIEW

FURUNO

ELECTRICAL PARTS LIST

Jan-99

Model	FE-700	
Unit	DISPLAY UNIT FE-701 DISTRIBUTION BOX FE-702	
Ref.Dwg.		Page
Blk.No.		

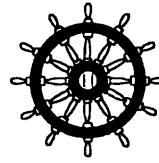
SYMBOL	TYPE	CODE No.	REMARKS	SHIPPABLE ASSEMBLY
PRINTED CIRCUIT BOARD				
	02P6281,ANLG	001-229-240	FE-701	○
	02P6282,MEM	001-229-220	FE-701	○
	02P6283,CONE	001-229-030	FE-702	○
	02P6280,MAIN	001-229-190	FE-701	
PANEL ASSEMBLY				
	FE-701	001-229-370	w/PAL 02P6250	○
COVER				
	FE-701	001-229-340		○
POWER ASSEMBLY				
	FE-702	001-228-980		○
TRANSFORMER				
T1	02S1256-0	000-142-779	FE-702	
SWITCH				
S1	M-2032L/B	000-474-351	FE-702	
FILTER				
FL1	ZCB2203-11	000-128-847	FE-702	
FUSE HOLDER				
FX1	FH043A	000-138-885	FE-702	
FX2	FH043A	000-138-885	FE-702	
TERMINAL BOARD				
TB6	ML250S1AXF-3P	00-142-535	FE-702	
TB7	ML250S1AXF-3P	00-142-535	FE-702	
JACK				
J1	MJ-A10SRMD	000-126-663		
FUSE				
F1	FGMB 1A 250V	000-142-771		
F2	FGMB 1A 250V	000-142-771		

FURUNO**FURUNO ELECTRIC CO., LTD.**

9-52 Ashihara-Cho, Nishinomiya City, 662-8580, Hyogo, Japan

Tel: +81 798-65-2111 Fax: +81 798-65-4200

Pub NO. DOC-491

Declaration of conformity**0735**We **FURUNO ELECTRIC CO., LTD.**-----
(Manufacturer)

9-52 Ashihara-Cho, Nishinomiya City, 662-8580, Hyogo, Japan

(Address)

hereby declare under our sole responsibility that the product

Navigational echo sounder model FE-700 consisting of Display unit FE-701, Distribution box FE-702, Matching box MB-502 (50 kHz), Matching box MB-504 (200 kHz), Transducer 50B-6B (50 kHz), Transducer 200B-8B (200 kHz), Junction box JIS F8821-1 and optional Transducer switch box EX-8 and Digital depth indicator FE-720

(Model names, type numbers)

to which this declaration relates conforms to the following standard(s) or normative document(s)

IMO Resolution A.224(VII)

IMO Resolution MSC.74(69) annex 4

IMO Resolution A.694(17)

EN ISO 9875: 1997 (ISO 9875 2nd edition: 1996-08-01)

ISO 9875 3rd edition: 2000-11-01

EN 60945: 1997-01 (IEC 60945 3rd edition: 1996-11)

EN 61162-1: 2001 (IEC 61162-1 2nd edition: 2000-07)

(title and/or number and date of issue of the standard(s) or other normative document(s))

For assessment, see EC – type approval certificate Nr. 6296/023/02 of 04 July 2002 issued by Federal Maritime and Hydrographic Agency, The Federal Republic of Germany

This declaration is issued according to the provisions of European Council Directive 96/98/EC on marine equipment modified by Commission Directive 98/85/EC and further amended by the Commission Directive 2001/53/EC.

On behalf of Furuno Electric Co., Ltd.

Hiroaki Komatsu

Manager,

International Rules and Regulations

Nishinomiya City, Japan

September 3, 2002

(Place and date of issue)-----
(name and signature or equivalent marking of authorized person)